

# Savage Ram Positioning Controller

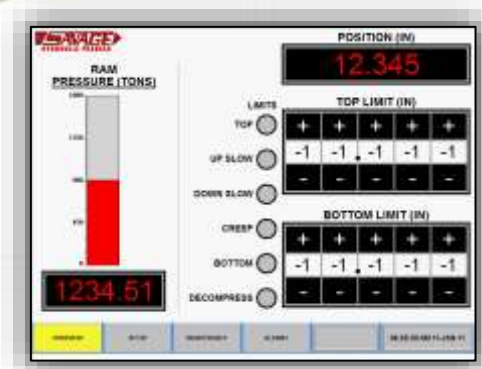
DOCUMENT 12037



The Savage RPC measures, displays and controls ram stroke or platen position to three (3) decimal place accuracy. The RPC is excellent for straightening, assembly or any application requiring precise ram position control. It is also used as a programmable limit switch, even on applications that do not require position control.



**POSITION ACCURACY TO  $\pm.001$ "**



## FEATURES

- Large, 'at a glance' five (5) digit red LED display indicates actual ram position.
- User-friendly. Simple push wheel entry provide setpoints for ram position limit settings (programmable limit switch)
- Utilizes an MTS Temposonics SSI position sensor to measure piston travel within a hydraulic cylinder
- Stops the ram  $\pm.001$ " positional accuracy
- Eliminates limit switches
- Repeatable to  $\pm.001$ "
- Unit can be set to inches or millimeters
- Non-contact sensor means zero wear
- Accuracy is attained with standard valving, eliminating the need for expensive and unreliable servo valving
- The Savage RPC is excellent for straightening applications requiring precise ram position control



**SAVAGE HYDRAULIC PRESSES ARE APPLICATION-SPECIFIC AND JOB-ENGINEERED**

Tonnage, bed size, stroke, daylight openings, and speeds are all customer-selected to meet your exact specifications



**SAVAGE ENGINEERING & SALES, INC.**

4855 Chaincraft Road  
Garfield Heights, OH 44125

• Phone: 216-587-2885 • Fax: 216-587-0613 • [www.savagepress.com](http://www.savagepress.com) • [sales@savagepress.com](mailto:sales@savagepress.com) •

metal forming

compression molding

straightening

sheet molding

drawing

assembly

horizontal

compaction

powder compaction

laminating

gluing/bonding

forcing

die repair

blanking

die spotting

special work

composites molding

bulldozing

trimming

hot press

fluid forming

hobbing

automation