

metal forming

compression molding

die spotting

blanking

drawing

die try-out

straightening

hobbing

assembly

forcing

friction molding

steel rule die cutting

bulldozing

trimming

compaction

laminating

briquetting

plastic molding

metal working

special work

composite molding

fluid forming

sheet molding

gluing / bonding

hot presses

superplastic forming

urethane forming

automation

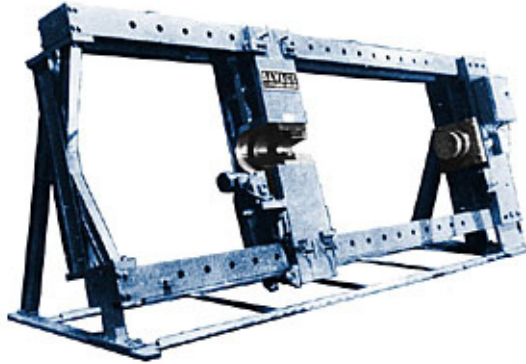
Forcing Presses

50 TO 1000 TON CAPACITY MODELS AVAILABLE

DOCUMENT 11016

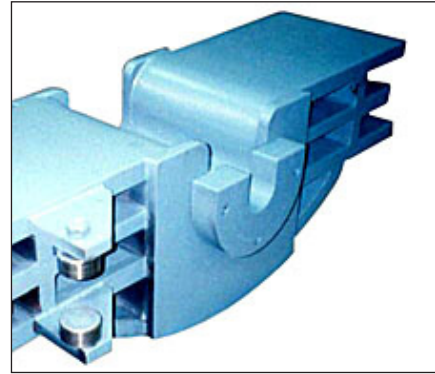


Horizontal forcing presses, also known as Wheel Presses, are used to push/pull wheels, sheaves, gears, etc. onto/off shafts, rolls, armatures or axles. Forcing Presses have roller mounted crossheads for ease in positioning. Available with rail mounted shaft support carriage, material handling hooks and powered or manual crank crosshead positioning. Hand lever ram control with automatic pressure hold and automatic ram return. Heavy duty twin rail design. Fabricated weldments - no breakage prone castings are used in any Savage press. Open end design allows work of infinite lengths. Many sizes and models available.



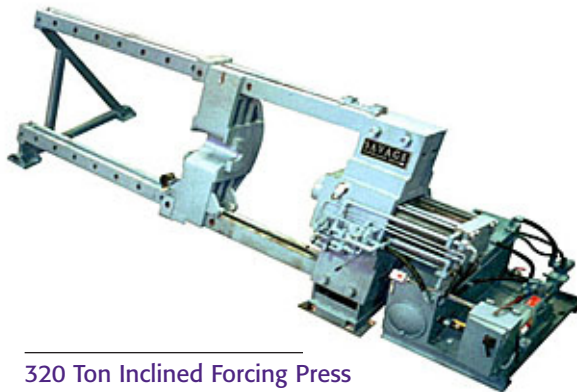
400 Ton Inclined Frame

Model shown is inclined to 75° to allow overhead loading.

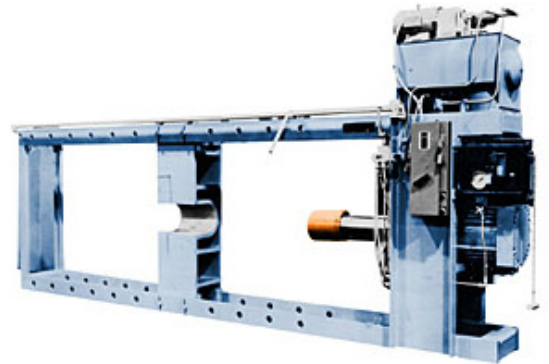


Yoke with Nesting Adapters

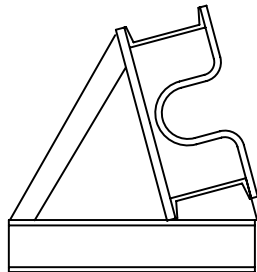
Yokes are sized for your largest shafts. Adapters on the yoke nest into each other to reduce this size.



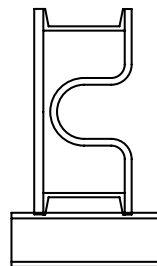
320 Ton Inclined Forcing Press



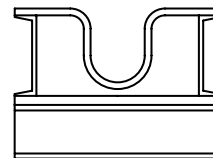
100 Ton Horizontal Ram, Vertical Frame Forcing Press for Railcar Wheels



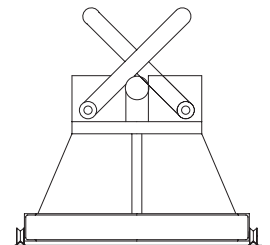
Inclined Frame



Vertical Frame



Open Top



Shaft support carriage prevents sag in long shafts

www.savagepress.com



SAVAGE ENGINEERING & SALES, INC.

4855 Chaincraft Road • Cleveland, Ohio 44125
Tel: 216.587.2885 • Fax: 216.587.0613